



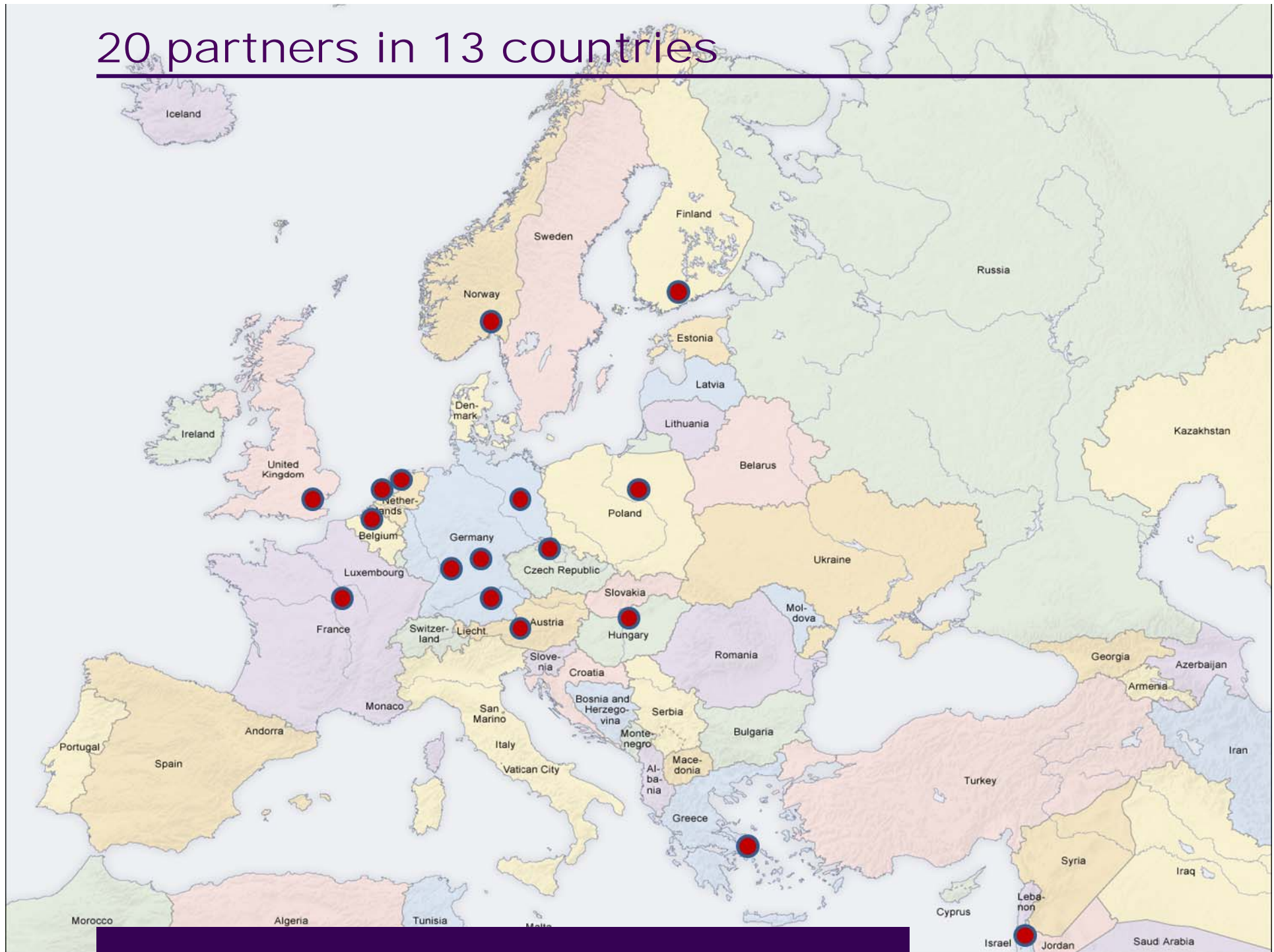
Introducing EHRI
ARIADNE Kick-off Meeting
Rome, February 7, 2013

CONNECTING COLLECTIONS

Map of the Holocaust in Europe during World War II, 1939-1945. This map shows all extermination camps or death camps, most major concentration camps, labor camps, prison camps, ghettos, major deportation routes and major massacre sites. Not all camps and ghettos are shown. Author: Dennis Nilsson.



20 partners in 13 countries



Partners EHRI

P No	Participant Organisation Name	Short name	Country
P1	NIOD Institute for War, Holocaust and Genocide Studies	NIOD-KNAW	Netherlands EU
P2	Centre for Historical Research and Documentation on War and Contemporary Society	CEGES-SOMA	Belgium EU
P3	Židovské muzeum v Praze (Jewish Museum in Prague)	JMP	Czech Republic EU
P4	Institut für Zeitgeschichte München-Berlin	IfZ	Germany EU
P5	Yad Vashem the Holocaust Martyrs and Heroes Remembrance Authority	YV	Israel AC
P6	The Wiener Library Institute of Contemporary History	WL	United Kingdom EU
P7	Holocaust Documentation Center and Memorial Collection Public Foundation	HMC	Hungary EU
P8	Senter for studier av Holocaust og livssynsminoritetens (The Center for Studies of Holocaust and Religious Minorities)	HLS	Norway AC
P9	Kansallisarkisto (National Archives of Finland)	NAF	Finland EU
P10	Żydowski Instytut Historyczny im. Emanuela Ringelbluma (Jewish Historical Institute)	JHI	Poland EU
P11	King's College London	KCL	United Kingdom EU
P12	Georg-August-Universitaet Goettingen Stiftung Oeffentlichen Rechts	UGOE	Germany EU
P13	Digital Curation Unit R.C. "Athena", Research and Innovation Center in Information, Communication and Knowledge Technologies	Athena RC/IMIS	Greece EU
P14	Data Archiving and Networked Services	DANS-KNAW	Netherlands EU
P15	Mémorial de la Shoah	MS	France EU
P16	International Tracing Service	ITS	Germany EU
P17	Stiftung Denkmal für die ermordeten Juden Europas (Foundation Memorial to the Murdered Jews of Europe)	DB	Germany EU
P18	Památník Terezín (Terezín Memorial)	TM	Czech Republic EU
P19	Theresienstadt Martyrs Remembrance Association (Beit Theresienstadt)	BT	Israel AC
P20	Vienna Wiesenthal Institute for Holocaust Studies	VWI	Austria EU

EHRI facts

- 2010 – 2014 (48 months)
- Supported by the 7th Framework Programme of the European Union
- Funding scheme: Integrated Infrastructure Initiative I3)
- 20 partners (research institutions, libraries, archives, museums and memorial sites)
- 3 disciplines: history, archival science and digital humanities
- Coordinator: NIOD Institute for War, Holocaust and Genocide Studies, dr. Conny Kristel

The Adler case

KL: Weimar-Buchenwald 244
Jude

Häftlings-Personal-Karte

Fam.-Name: Adler Überstellt
Vorname: Hans am: 19.11.44 an KL
Geb. am: 2.7.10 in Prag Buchenwald
Stand: Kinder: am: an KL
Wohnort: am: an KL
Strasse: am: an KL
Religion: Staatsang: Polit. Tscheche-Jude an KL
Wohnort d. Angehörigen: am: an KL
Eingewiesen am: am: an KL
durch: Auschwitz am: an KL
in KL: Auschwitz
Grund: Polit. Tscheche-Jude Entlassung: durch KL: 10.10.1944

Personen-Beschreibung:
Grösse: cm
Gestalt: stark
Gesicht: stark
Augen: blau
Nase: stark
Mund: stark
Ohren: stark
Zähne: stark
Haare: stark
Sprache: stark
Bes. Kennzeichen: 1002
Charakt.-Eigenschaften: 1609
Sicherheit b. Einsatz: stark
Körperliche Verfassung: stark

Alphabetisches Verzeichnis zum Transport Equ,
abgegeben am 15.10.1944.

1372	Abeles-Kohn	Lina	366	Baum	Joos
1393	Abram	Erika S.	397	Baum	Karise
1393	Abram	Ida S.	1206	Bauer	Eva
1460	Adler Wdr.	Gertrude	1207	Beiser	Gerda
287	Adler	Hedra S.	1205	Bier	Max
1461	Adler Dr.	Hans Günther	378	Barber	Grete
286	Adler	Hildegard S.	375	Barber	Paul
1090	Adler	Jenny S.	363	Barbach	Hermann I.
89	Adler	Julius Frdr.	51	Barthfeld	Wesula I.
1114	Adler-Fiesel	Vina	15	Baruch	Ida S.
217	Adler	Otto	1438	Bass	Brudo I.
313	Adler	Rosa	650	Bauer	Anna Marg.
347	Agular	Irma	656	Bauer	Marie
346	Agular	Julie	328	Baum	Marie
345	Agular	Margaretha	358	Baum	Wilhelm
343	Agular	Martha	580	Baumgarten	Klla
344	Agular	Ulrich	1197	Beckman-Bamberger	Elara
1200	Aker-Hers	Dora	1196	Beckman	Valr
9	Ajster	Hana	278	Beckenborg	Regula
127	Alconna-Vieyra	Estelle	1290	Behrendt-Malachow	Henry I.
303	Amor	Anna S.	423	Behrendt	Harry I.
945	Amsterl	Marlene	422	Behrendt	Lilly S.
463	Apt	Frída S.	1291	Behrendt-Malachow	Henry S.
881	Ardei	Adolph I.	1201	Behrendt	Peter Adolf
880	Ariel	Bertine S.	651	Behrendt	Valter I.
353	Azely	Siegfried	426	Beck	Bacon
642	Azende	Katje S.	300	Beck	Irene
817	Azende	Margareta S.	264	Beck	Paul
642	Azende	Ulrich I.	1223	Beck-Mante-Pimentel	Judith
386	Azstein	Blanka Eva	1202	Bel-Blatte	Maurice Joas
388	Azstein	Hans Peter	1207	Beck	Hans
684	Azstein	Josef	1150	Beck	Hans
384	Azstein	Lilly J.	1181	Beck	Paula
387	Azstein	Paula	374	Becker	Chari. Marg. S.
385	Azstein	Thomas Ivo	93	Beck	Paula S.
1443	Ascher	Minnie S.	180	Beck	Adolf
1212	Aschermann	Peter	121	Beck	Grete
1213	Aschermann	Sigrid	1208	Beck	de Benedicty-Spinosa
56	Auerbach	Lucie	1261	Beck	Castella Jussupum Esther
1100	Auerbach	Adolf	1261	Beck	de Benedicty
1186	Axelrad	Lee S.	607	Beck	Hochman
350	Babion	Therese S.	606	Beck	Paula
1028	Bachensheimer	Ellen S.	403	Beck	Frieda S.
1027	Bachensheimer	Herta S.	711	Beck	Harry
1010	Baez	Henriette Dora S.	1312	Beck	Betty S.
834	Bar	Ida	1311	Beck	Doris S.
89	Barwald	Martha S.	1311	Beck	Paula S.
354	Baum	Hana	23	Beck	de Benedicty
353	Baum	Georgie	266	Beck	de Benedicty

Equ

12. 10. 1944



The Adler Case

5 - King's College

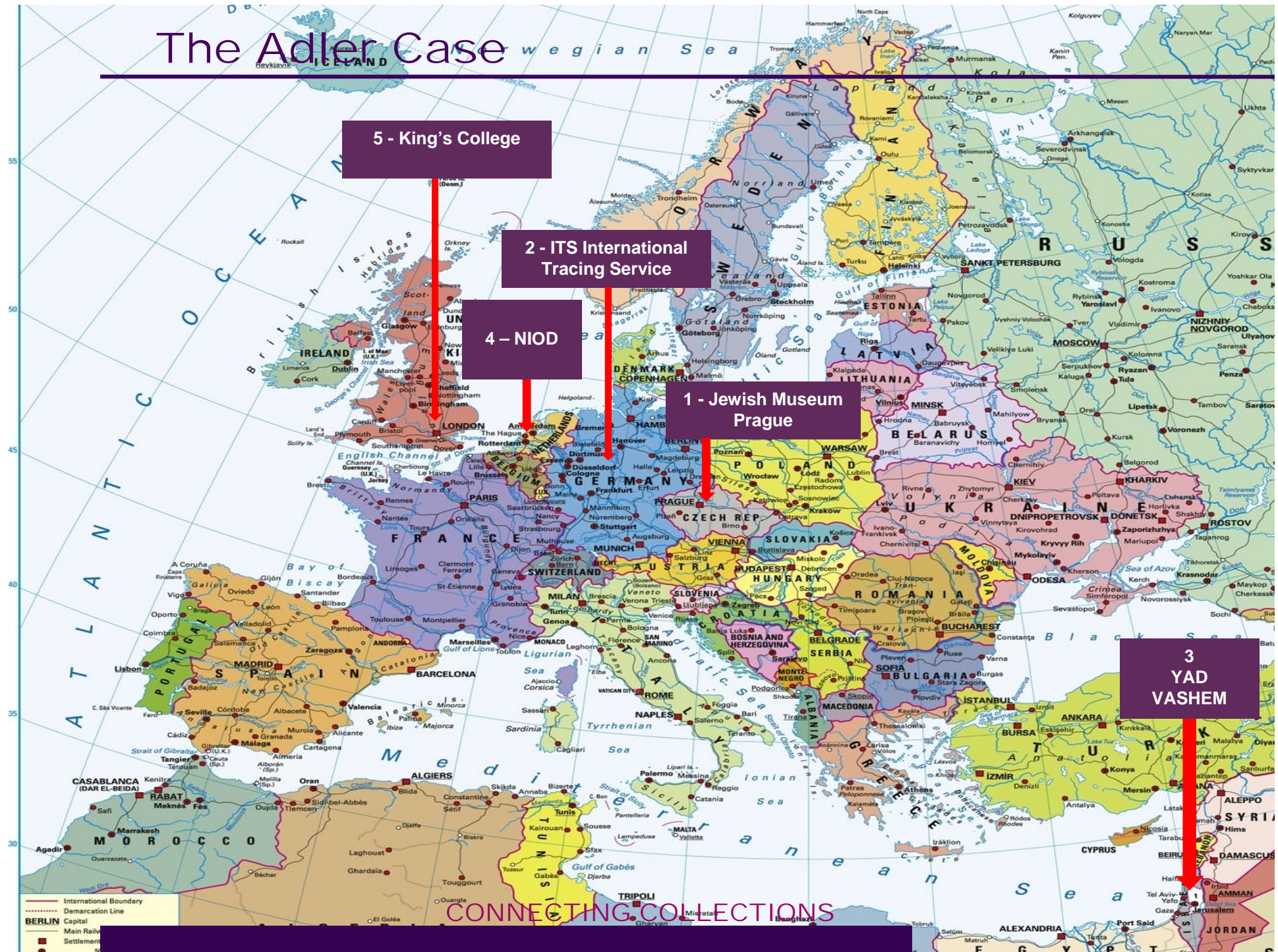
2 - ITS International
Tracing Service

4 - NIOD

1 - Jewish Museum
Prague

3
YAD
VASHEM

CONNECTING COLLECTIONS



Why EHRI ?

■ **Fragmentation and dispersal of archival sources**

- Geographical scope Holocaust
- Attempts to destroy the evidence
- Migration of Holocaust survivors
- Multiplicity documentation projects after the war

■ **Internationalization Holocaust research**

- Holocaust in Eastern Europe
- New levels of collaborative research

Supporting research into the Holocaust

- **Improve (online) access to Holocaust material**
- **Initiate new levels of collaborative research**
- **Enable historiographical progress (transnational and comparative research)**



■ **Bringing collections together**

- Investigation of Holocaust collections
- Keywords and Thesaurus
- Data Integration Infrastructure
- Trans-institutional Research Guides
- Portal and Online Research Environment
- Standards and Guidelines
- Access, Privacy and Copyright Policies
- User requirements

■ **Bringing researchers together**

- Methodological Innovation
- Communication and Dissemination
- Training, Summer Schools
- Expanding the network, especially to Eastern Europe

■ **Fellowship programme (transnational access)**

Author: Dennis Nilsson.

Author: Dennis Nilsson.



Eastern European Jewish Holocaust Victims

	Total pop. on the eve of WWII	Jewish pop. on the eve of WWII	% of total population	Estimated number of murdered
USSR	168,000,000	3,020,000	1.8	1,050,000
Poland	32,040,000	3,300,000	10.3	2,950,000
Estonia	1,125,000	4,500	0.4	1,750
Latvia	1,830,000	91,500	5	70,750
Lithuania	2,302,000	168,000	7.3	141,500

EHRI's focus on Eastern Europe

- **Case study on Ukraine resulted in identifying about 1,000 collections, bringing the players in the field in contact with each other & starting up cooperations**
- **Similar workshops regarding Belarus, Lithuania and Poland**
- **Conference of archivists and researchers in Cracow, Poland in 2014 to discuss the state of Holocaust documentation in Eastern Europe**

WP15 workshop on Ukraine on 19 July 2012 (IfZ)



Results of the workshops help EHRI reach its overall objectives

The main objective of EHRI is to support the Holocaust research community by:

- 1. Improving access to Holocaust material**
- 2. Facilitating collaborative research**
- 3. Enabling historiographical progress**



EHRI Fellowships in Holocaust Studies

- 36 researchers will be invited to stay for a period of four weeks to two months at an EHRI partner institute:
 - **NIOD Institute for War, Holocaust and Genocide Studies, Amsterdam, The Netherlands**
 - **Jewish Museum in Prague, Prague, Czech Republic**
 - **Institute of Contemporary History, Munich, Germany**
 - **Yad Vashem – The Holocaust Martyrs' and Heroes' Remembrance Authority, Jerusalem, Israel**
 - **The Shoah Memorial – Museum, Center for Contemporary Jewish Documentation, Paris, France**
- Selection by an international panel of experts
- 2012: 75 applicants from 22 countries
- 2013: 46 applicants from 23 countries (more successful candidates from Eastern Europe than 2012)

EHRI Summer schools

Programme of four “Summer courses” is being prepared (2013-2014):

- **Overview of methods, sources and ongoing research**
- **Difficulties inherent in certain types of sources and problems that have been central to Holocaust research**
- **Using concrete examples**
- **Stimulate methodological innovation and new research themes**
- **Explore opportunities of digital research**

Main achievements - highlights

- Outreach to Holocaust research community with a special emphasis on Eastern and Southern Europe (fellows, workshops)
- Movement for integration
- Case studies (Ukraine, Greece)
- Metadata registry
- Prototype portal
- Collaboration with related institutions and/or projects

Expected impact

- European support and a European approach are essential to achieve a better understanding of the Holocaust as a European phenomenon
- EHRI will lead to a higher level of Holocaust knowledge and awareness



Stay informed ...

Visit EHRI at
www.ehri-project.eu



Contact EHRI at
www.ehri-project.eu/contact-us
and receive EHRI Newsletters and mailings



NIOD Institute for War, Holocaust and
Genocide Studies (NL)

CEGES-SOMA Centre for Historical Research
and Documentation on War and Contemporary Society (BE)

Jewish Museum in Prague (CZ)

Institute of Contemporary History Munich – Berlin (DE)

YAD VASHEM The Holocaust Martyrs' and
Heroes' Remembrance Authority (IL)

The Wiener Library – Institute of Contemporary History (UK)

Holocaust Memorial Center (HU)

HL-senteret Center for Studies of Holocaust
and Religious Minorities (NO)

NAF National Archives of Finland (FI)

The Emanuel Ringelblum Jewish Historical Institute (PL)

King's College London (UK)

Georg-August-Universität Göttingen – Göttingen
State and University Library (DE)

Athena RC/IMIS (GR)

DANS Data Archiving and Networked Services (NL)

Shoah Memorial, Museum, Center for Contemporary
Jewish Documentation (FR)

ITS International Tracing Service (DE)

Memorial to the Murdered Jews of Europe (DE)

Terezin Memorial (CZ)

Beit Theresienstadt (IL)

VWI Vienna Wiesenthal Institute for
Holocaust Studies (AT)