

Moving ahead: The integration process

Achille Felicetti – WP12

VAST-LAB - PIN, Università degli Studi di Firenze, Italy

Integration in ARIADNE

- Creation of an integrated ecosystem of archaeological information
- To guarantee interoperability among data coming from different archives
- To use data as if they were stored in a single archive
 - Unique access point
 - Uniform interfaces
- To ensure retrieval of information in a coherent and meaningful way
 - Semantics



Muhammad and the Mountain



Muhammad and the Mountain(s)



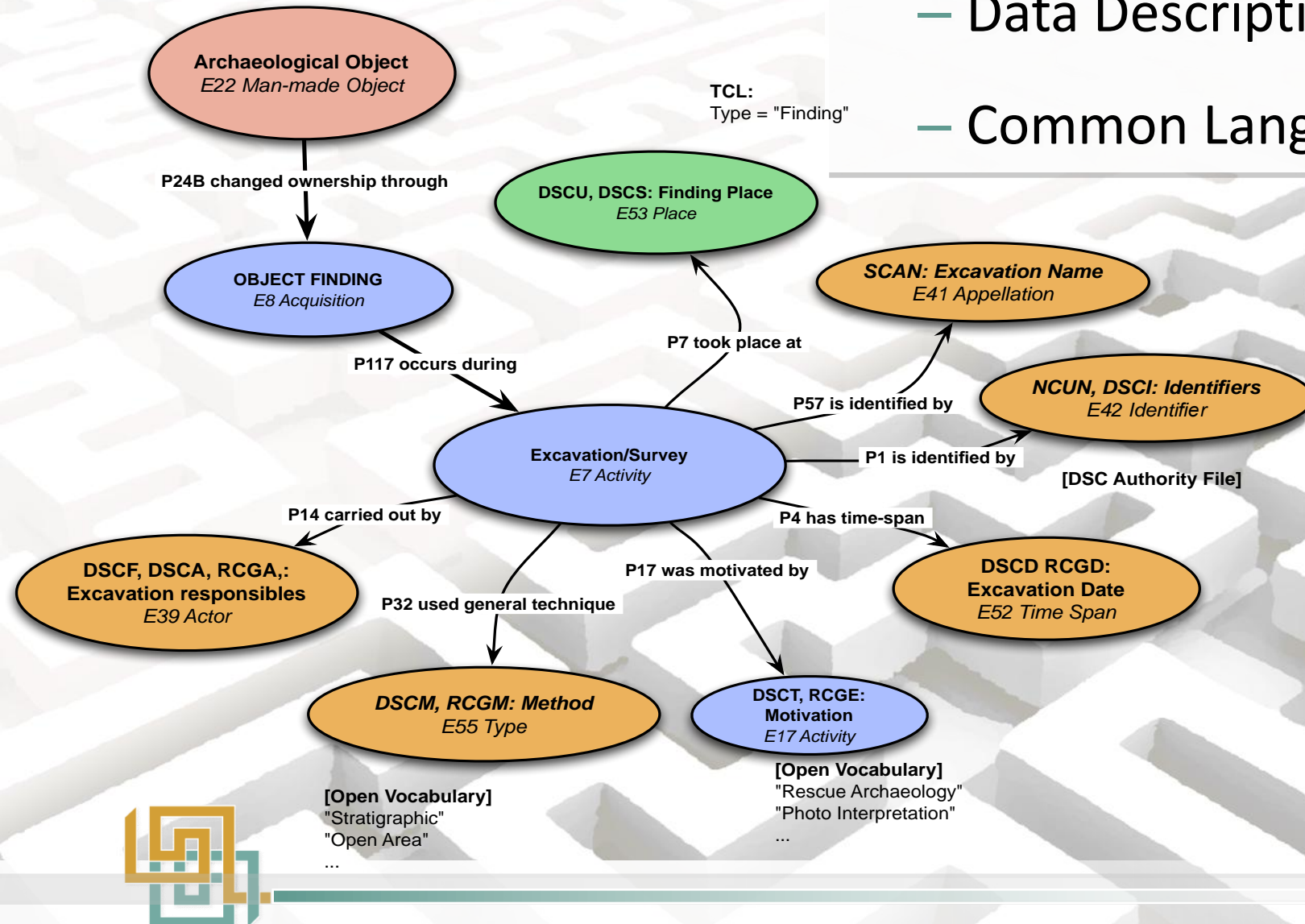
Preparing Legacy Archives

- Digitisation of information on paper
- Online availability
 - Microsoft Word, Excel, Access, PDF, GIS ...
- Online accessibility improvement
 - ADS, ARACHNE, ZENON, FastiOnline, ...
- Consistency checking for mapping and information extraction
 - Legacy data to CIDOC CRM
 - Legacy thesauri to SKOS

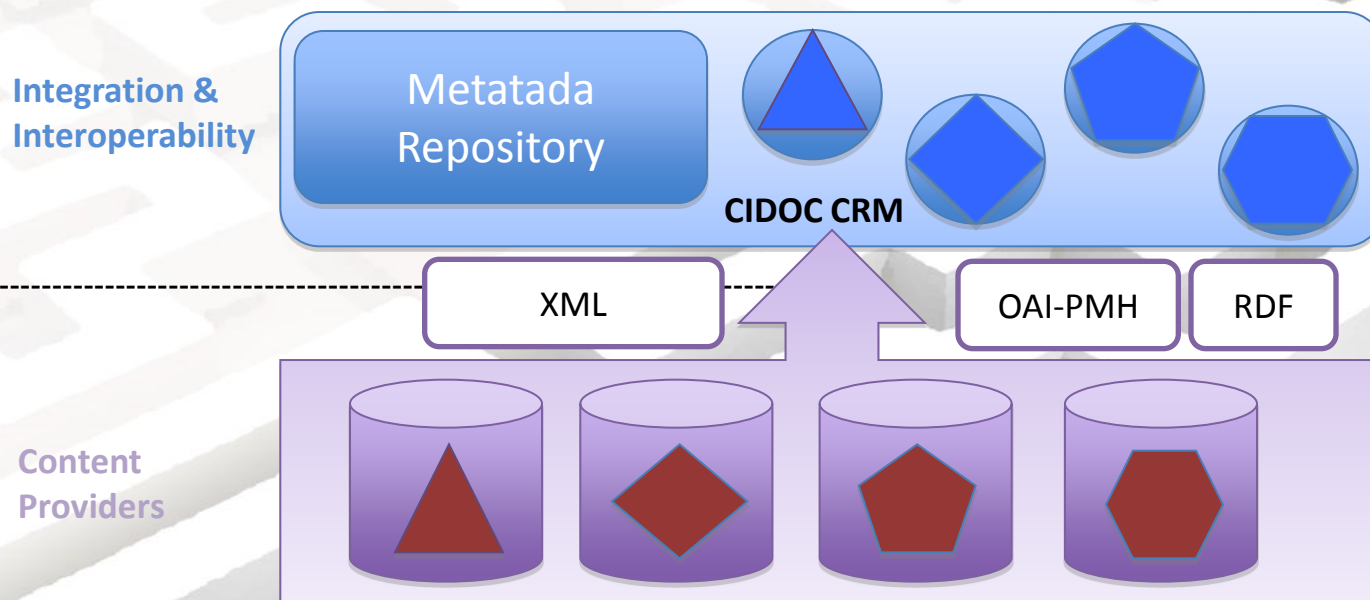


Mapping to CIDOC CRM

- Data Description
- Common Language



- Common semantic representation (mapping)
- Data transparency
- Data peculiarity preserved by the system



Querying the integrated archives

- User interfaces and the ARIADNE Portal
 - Main access point to system and services
- Archaeological objects, places, events, actors and types
 - Browse and refine with facet views
- Interaction with the Registry
 - Drives the queries towards the most relevant archives
- Interaction with terminological data and services
 - Vocabularies to provide support at query and retrieval time

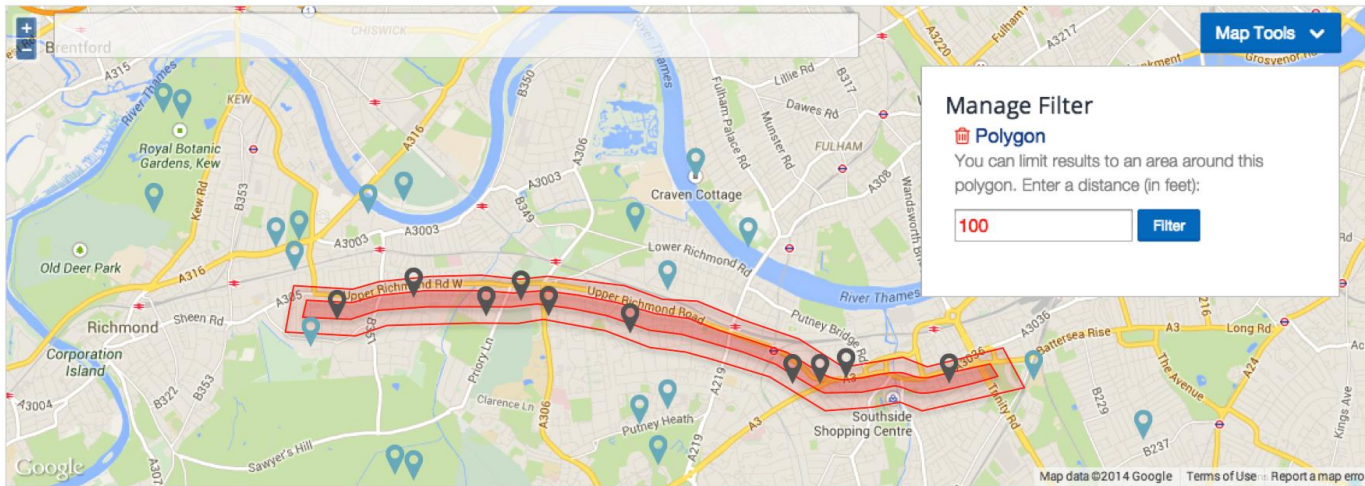


Query on Map and Timeline

218 Results

[Filter by map](#)

[Filter by time](#)



Castle Wolfenstein [Historic Resource](#)

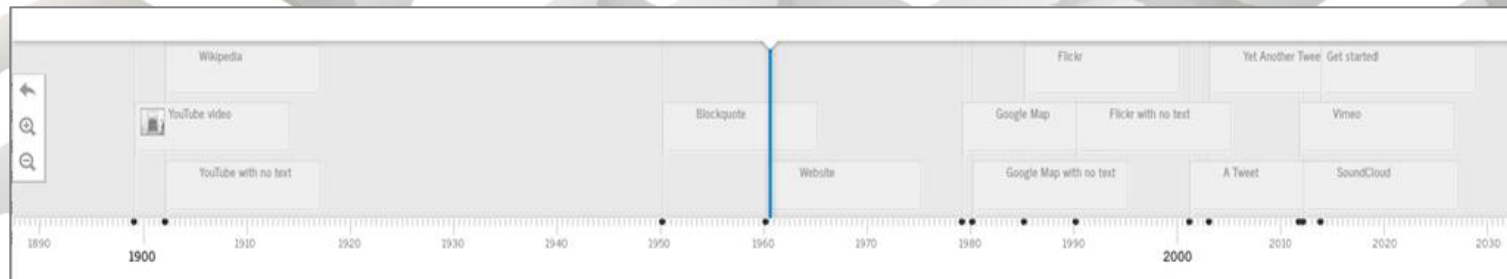
[Edit](#) [Report](#) [Related Resources](#)

Lorem ipsum dolor sit amet, consectetur adipiscing elit. Vestibulum ut orci urna. Morbi blandit enim eget risus posuere dapibus. Vestibulum velit nisi, tempus in placerat non, auctor eu purus. Morbi suscipit...

Castle Anthrax [Historic Resource](#)

[Edit](#) [Report](#) [Related Resources](#)

Lorem ipsum dolor sit amet, consectetur adipiscing elit. Vestibulum ut orci urna. Morbi blandit enim eget risus posuere dapibus. Vestibulum velit nisi, tempus in placerat non, auctor eu purus. Morbi suscipit...



Preserving legacy archives

- Legacy database synchronization
 - ARIADNE system constantly updated according to modifications of legacy archives
- References to legacy archives always provided
 - Data provenance
 - URLs to information on original portals/web applications
- User to navigate original information
 - To perform custom searches tailored on specific needs



ARIADNE
Portal

Configuration & Management

Browse/Query Interfaces

Integration
Services

Preview

Preservation

Resource
Discovery

Archive
Discovery

Vocabularies
Management

Digital
Asset
Management

Data Access
(SPARQL, REST)

Dataset
Discovery

WEB

Integration &
Interoperability

Vocabularies

Metadata
Enhancement

Metadata
Repository

CIDOC CRM

Registry

ACDM

LO
D

Deposit Services

OAI-PMH

XML

Content
Providers

Data
+
Metadata

Data
+
Metadata

Data
+
Metadata

Data
+
Metadata

Final considerations

- Very advanced stage of development
 - End of the project
- ARIADNE main goal
 - “Integration of existing archaeological research data infrastructure through new and powerful technologies” (ARIADNE DoW)
- “From differences results the most beautiful harmony” (*Heraclitus of Ephesus*)



Thank you

ARIADNE is a project funded by the European Commission under the Community's Seventh Framework Programme, contract no. FP7-INFRASTRUCTURES-2012-1-313193.

The views and opinions expressed in this presentation are the sole responsibility of the authors and do not necessarily reflect the views of the European Commission.

